



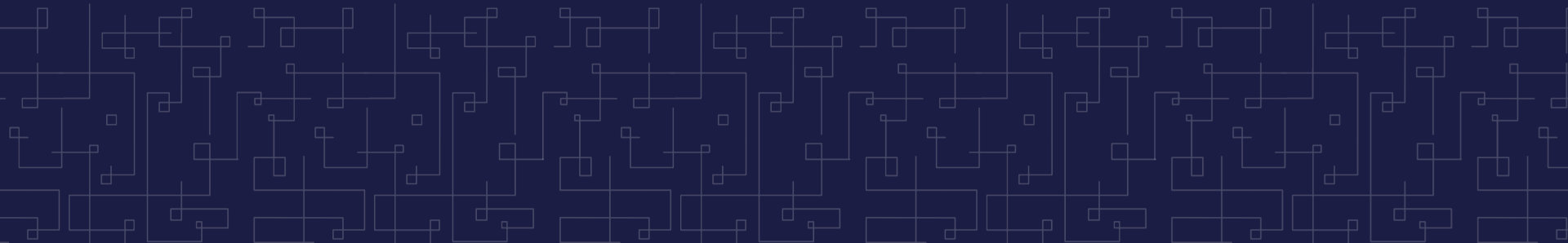
Is Zip Code Destiny?

Economic Mobility and Belonging in Oregon

Central Oregon City Club

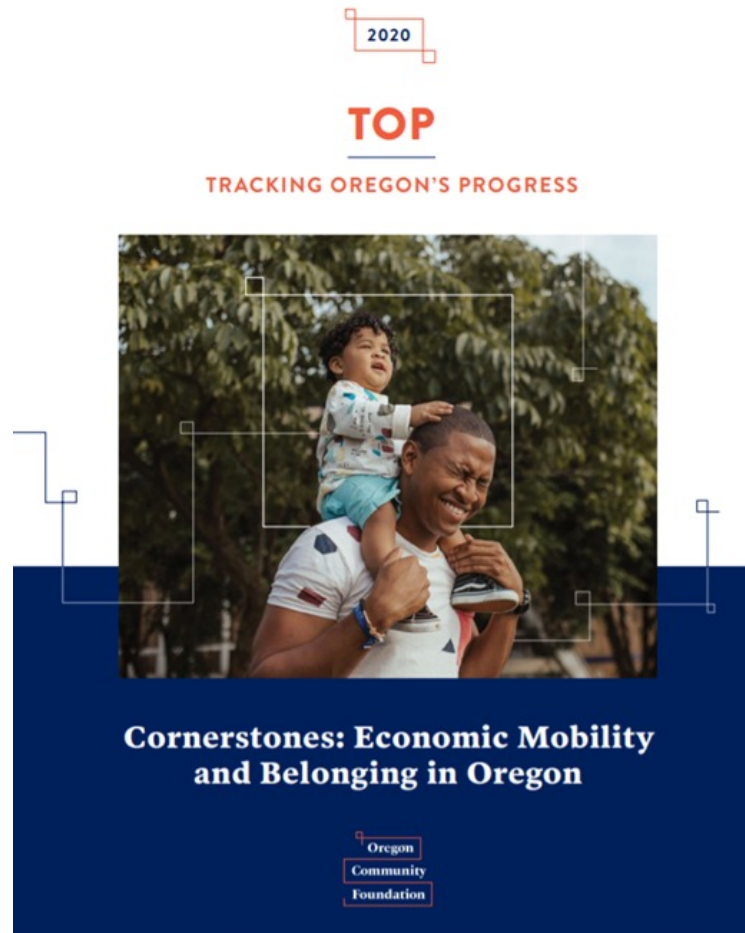
January 20th, 2022

Take a minute to think about the neighborhood
you grew up in.



The Opportunity Gap

Children from low-income families, children of color, and children in under-resourced rural communities have access to fewer opportunities.



Children born today
are unlikely to earn as
much as their parents
when they reach
adulthood.

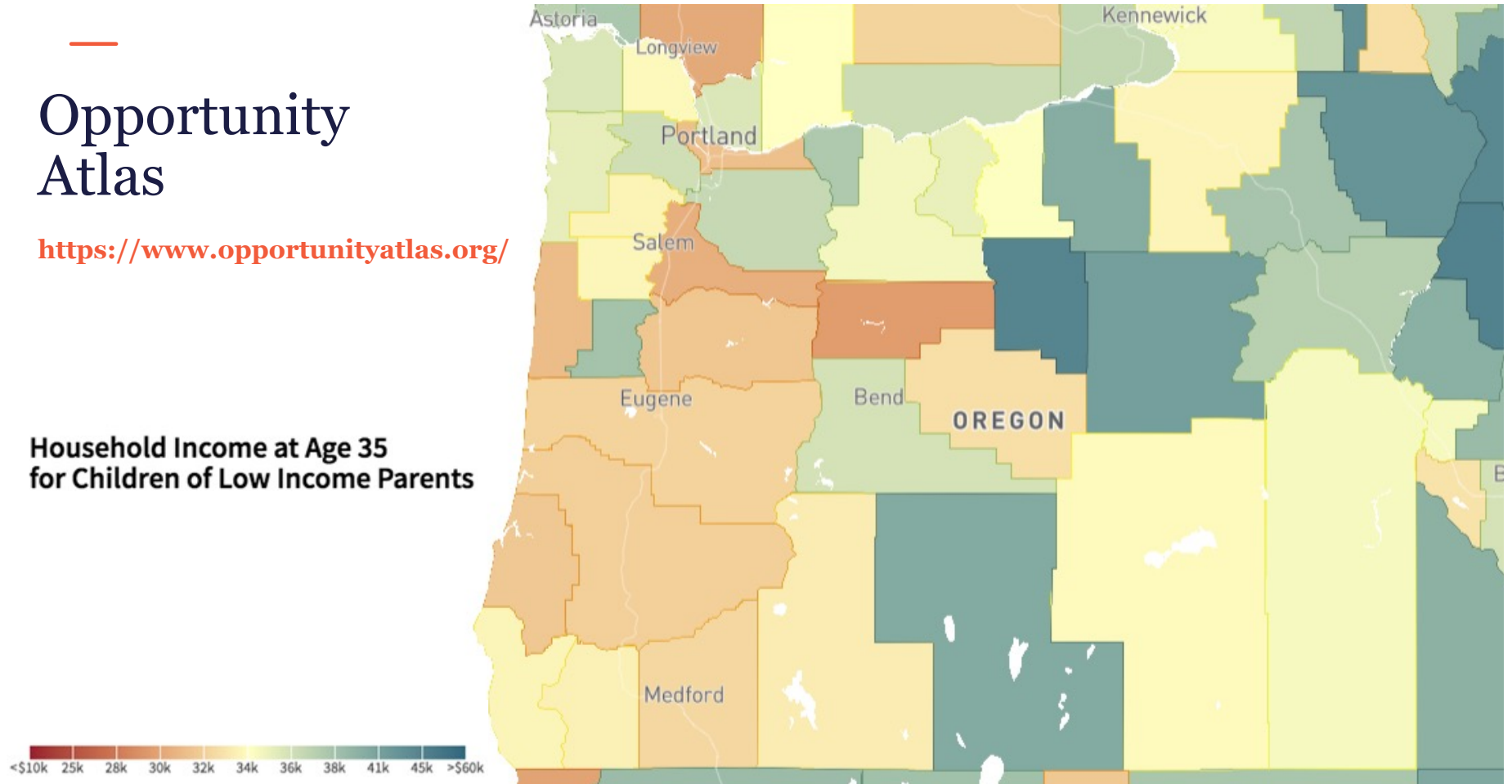
Children impacted by
the opportunity gap
are even less likely to
get ahead.



Opportunity Atlas

<https://www.opportunityatlas.org/>

Household Income at Age 35
for Children of Low Income Parents



Key Findings from the Opportunity Atlas

Neighborhood matters. Children who grow up just a few miles apart often experience vastly different outcomes.

Structural racism and discrimination play an important role in opportunity. Outcomes vary by gender and by race/ethnicity for children growing up in the same neighborhoods.

When we change neighborhoods, we change too. The longer children live in high opportunity neighborhoods, the more they earn as adults.



High-opportunity neighborhoods

Places where children born in poverty are likely
to earn more than their parents in adulthood

A decorative horizontal line positioned below the text.

Neighborhood Factors That Matter For Opportunity

Employment rates

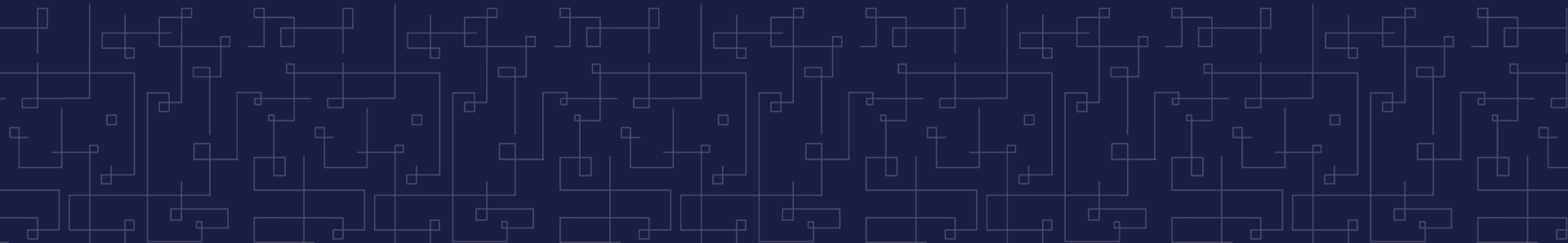
School quality

Integration
(racial/economic)

Social capital



What would need to shift in your neighborhood
to better support low-income children and families?

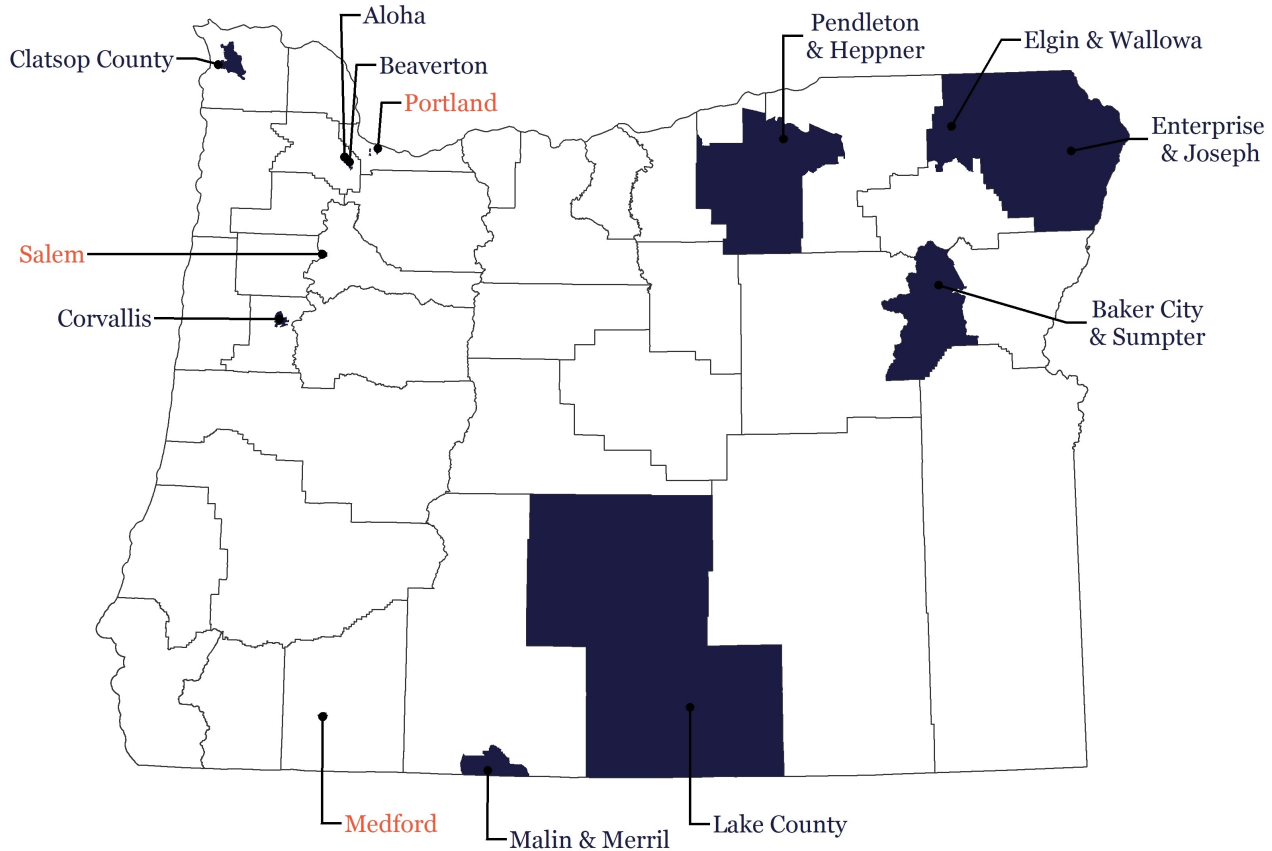




Economic Mobility in Oregon



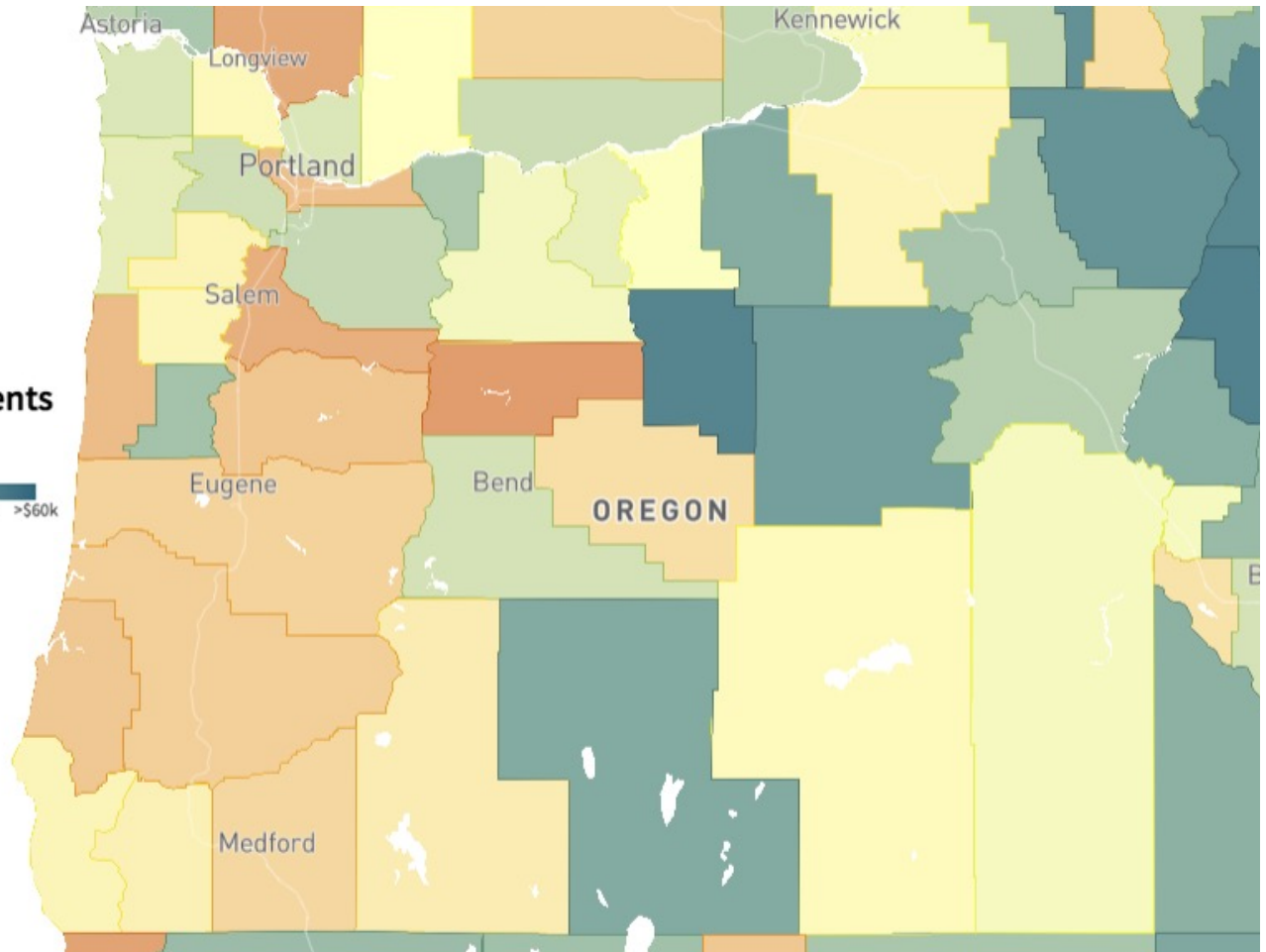
Highest and Lowest Opportunity Communities for low- income kids



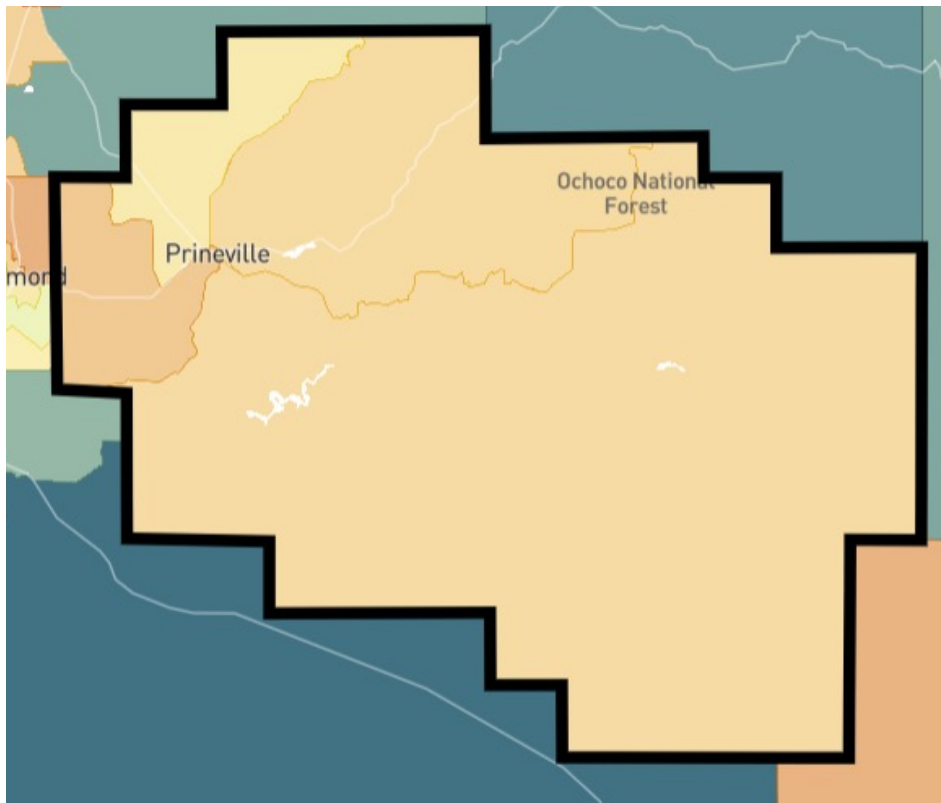
Opportunity Atlas

Household Income at Age 35
for Children of Low Income Parents

<\$10k 25k 28k 30k 32k 34k 36k 38k 41k 45k >\$60k



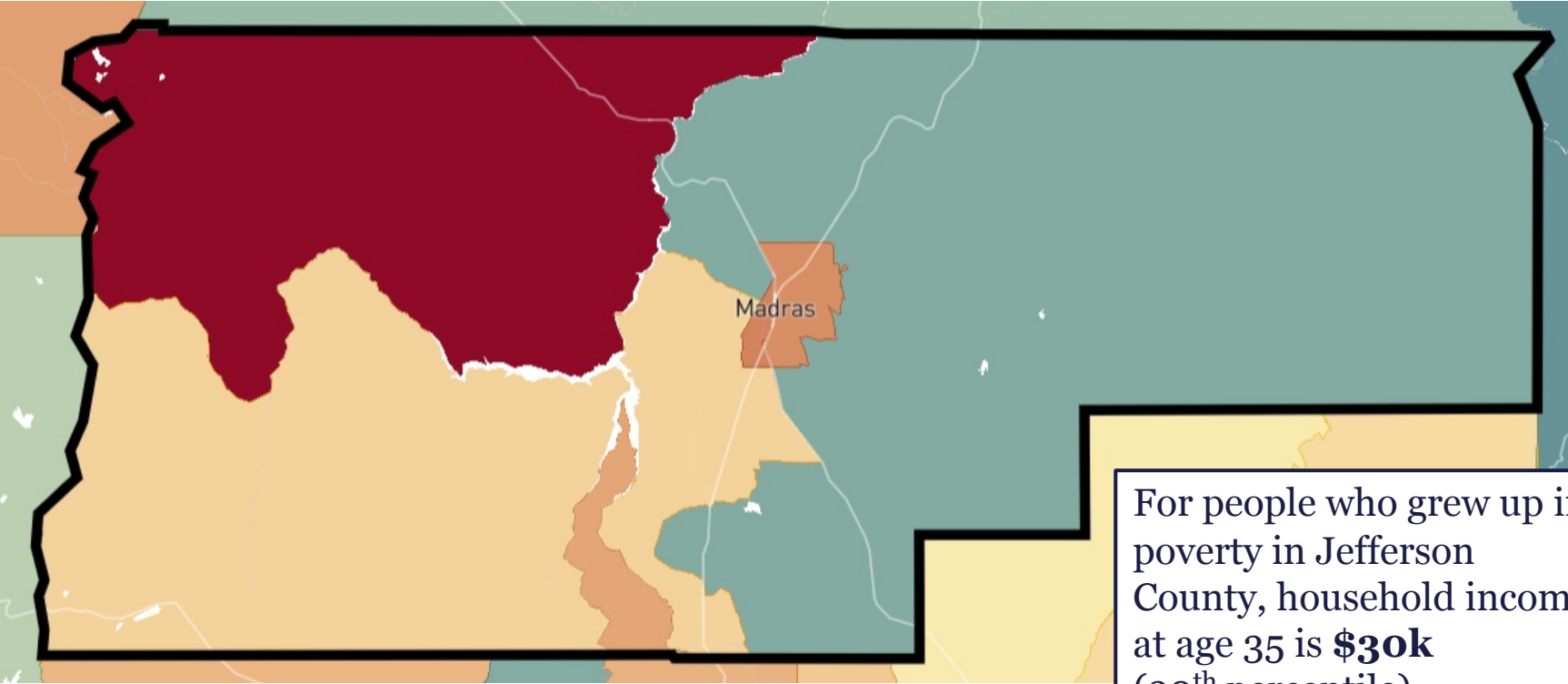
Economic Mobility in **Crook County**



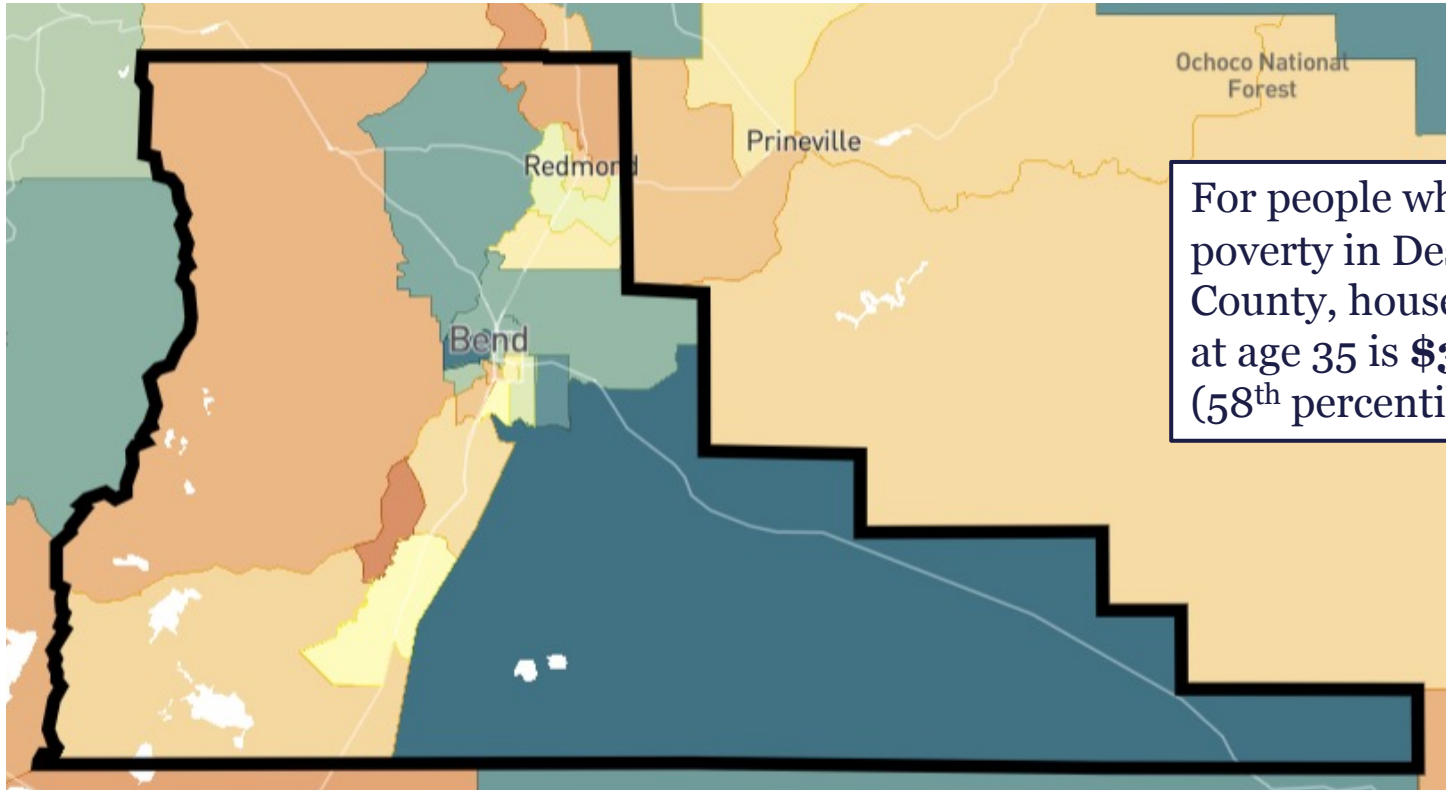
<\$20k 26k 28k 30k 32k 33k 35k 36k 39k 44k >\$55k

For people who grew up in poverty in Crook County, household income at age 35 is **\$32k** (44th percentile)

Economic Mobility in **Jefferson County**



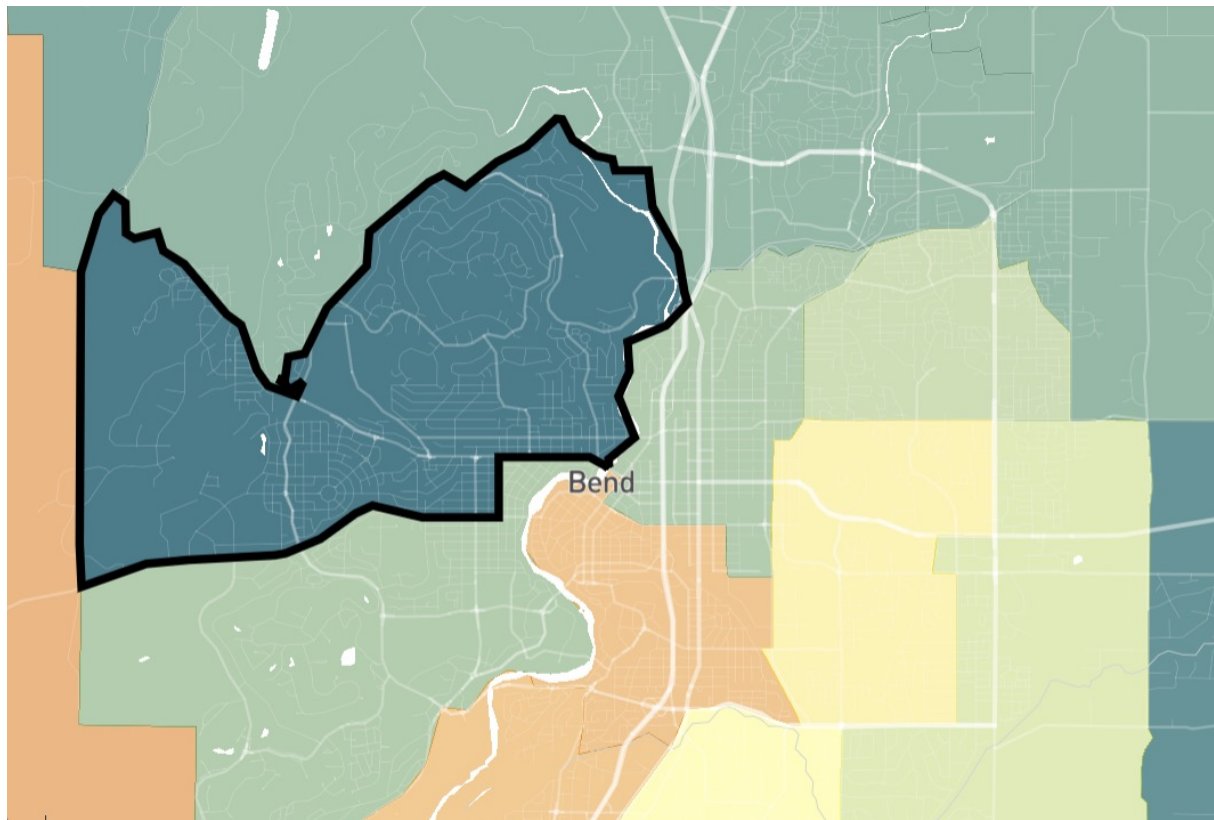
Economic Mobility in **Deschutes County**



For people who grew up in poverty in Deschutes County, household income at age 35 is **\$34k** (58th percentile)

<\$20k 26k 28k 30k 32k 33k 35k 36k 39k 44k >\$55k

Economic Mobility in **Bend** (Tract 41017001300)



<\$20k 26k 28k 30k 32k 33k 35k 36k 39k 44k >\$55k

For people who grew up in poverty in this census tract, household income at age 35 is **\$44k** (88th percentile)

Thank you!

Anne George, Sr. Donor Relations Officer, Central Oregon ageorge@oregoncf.org

Madeline Brandt, Research Officer mbrandt@oregoncf.org