

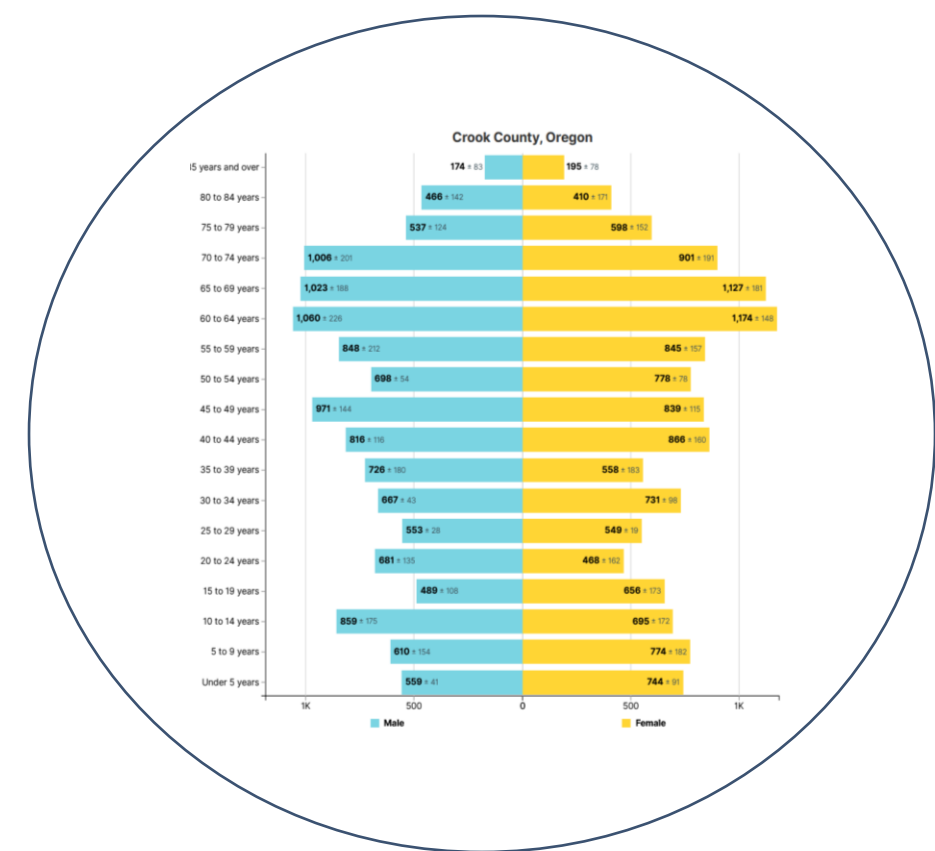
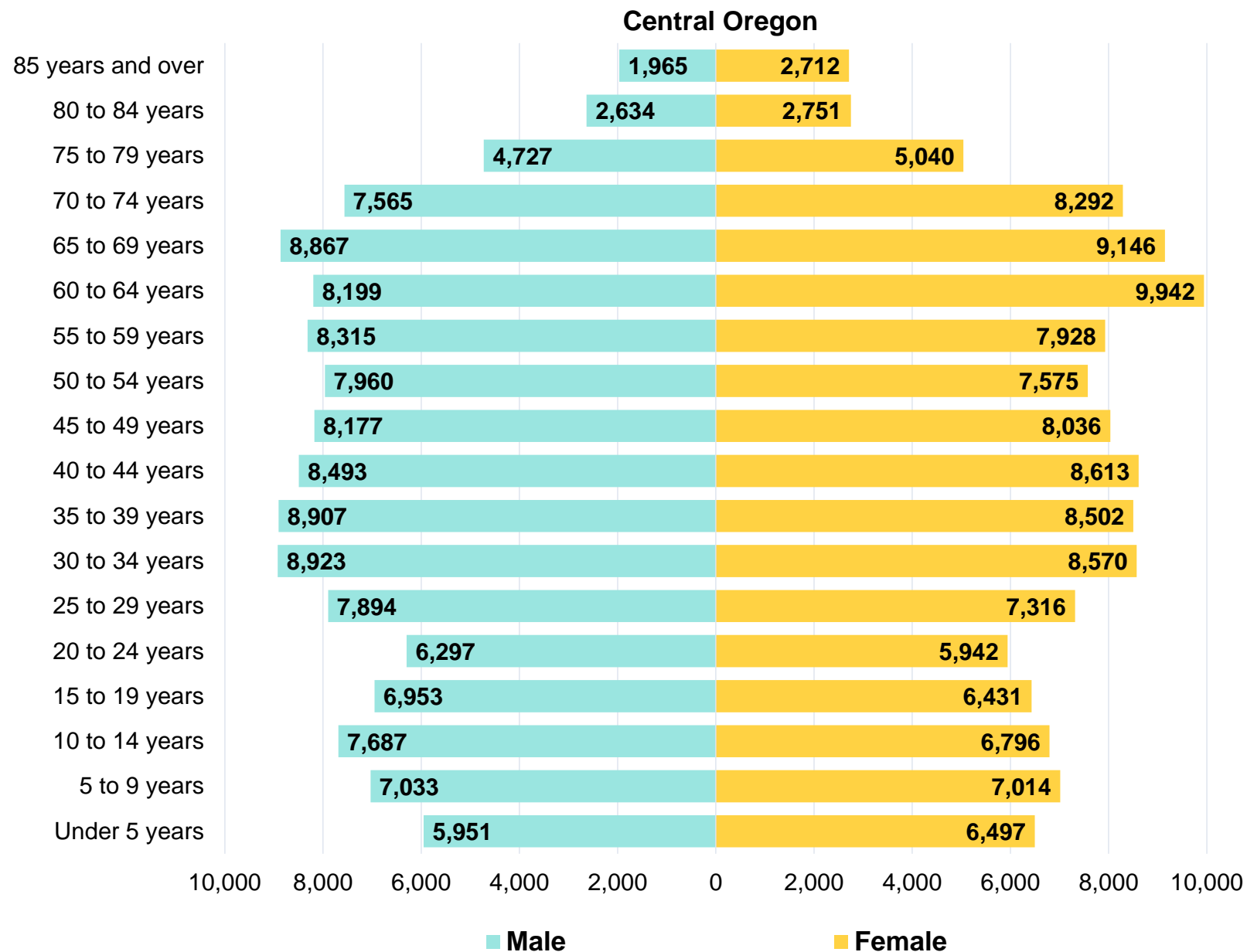
# **ACCESS TO CARE: A GROWING AND AGING POPULATION SOME DEMOGRAPHICS**

**U.S. CENSUS BUREAU, PORTLAND STATE UNIVERSITY, AND  
OREGON EMPLOYMENT DEPARTMENT DATA**

**JANUARY 16, 2025**

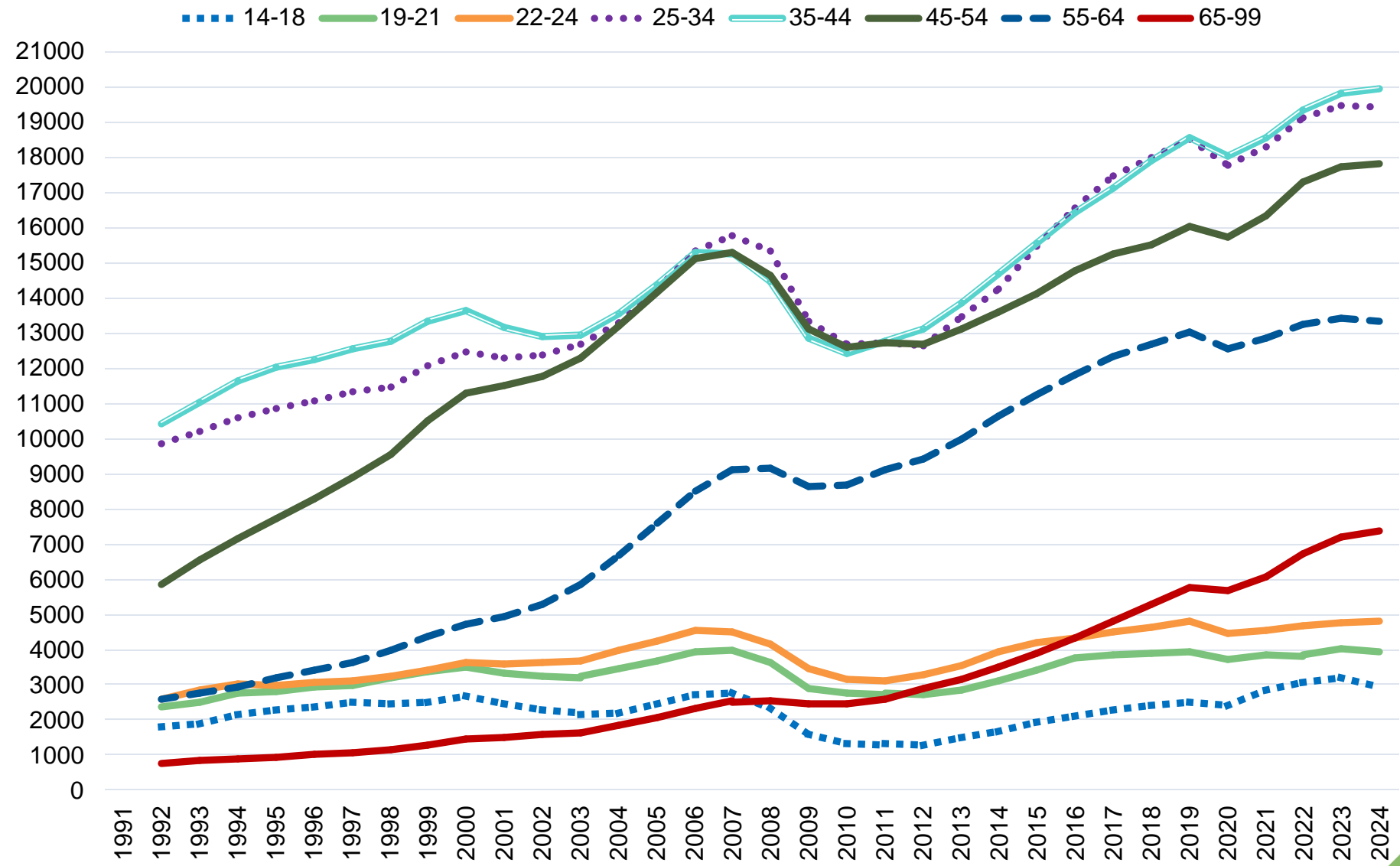
# 2023 POPULATION PYRAMID: CENTRAL OREGON POPULATION BY AGE AND SEX

Source: 2019-2023 American Community Survey, 5-Year Estimates



# PRIVATE EMPLOYMENT BY AGE GROUP IN CENTRAL OREGON, 1992-2024

Source: U.S. Census Bureau, Center for Economic Studies, LEHD, Quarterly Workforce Indicators

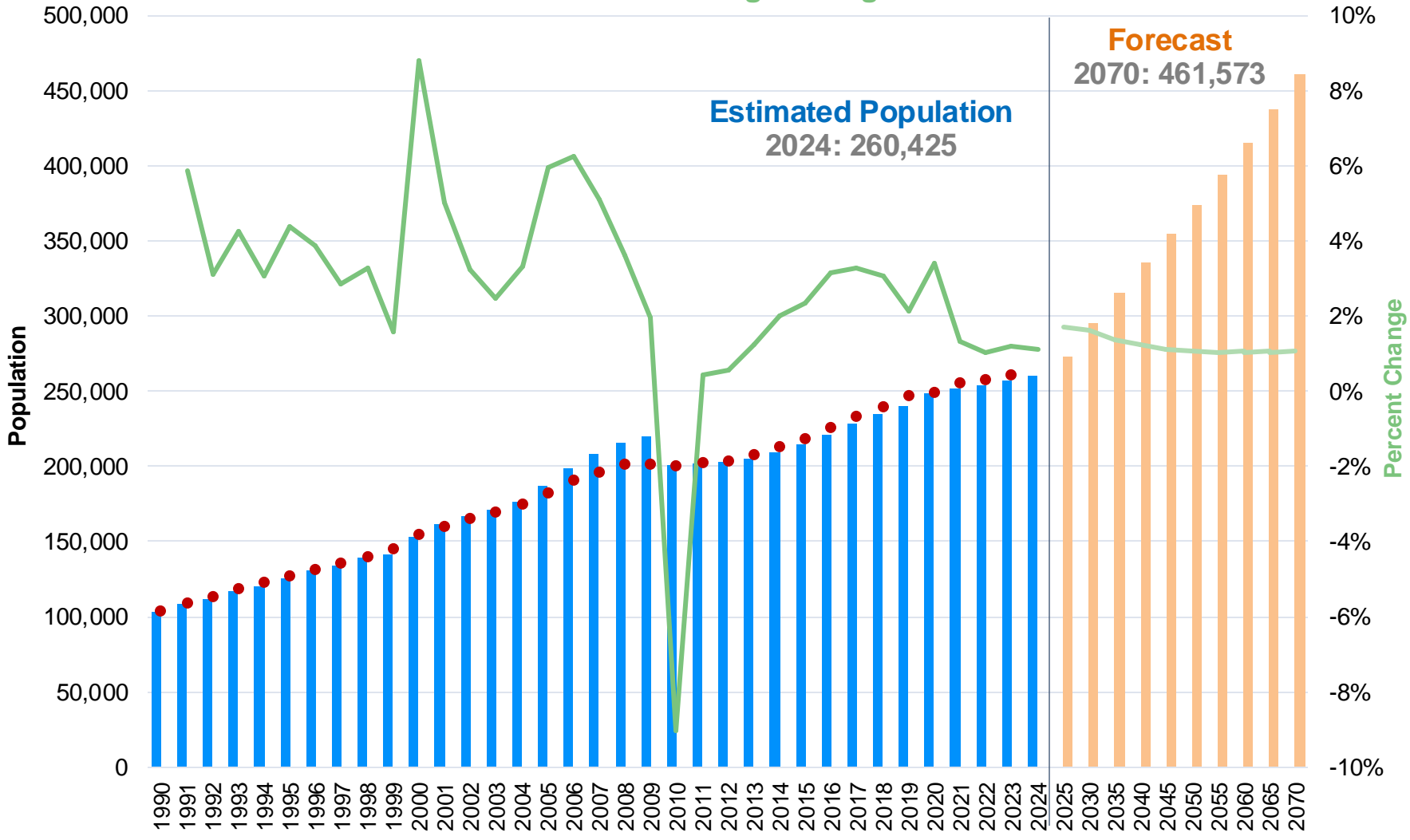


- In Central Oregon 23% of jobs were held by workers ages 55+.
- 29% in Jefferson County
- 25% in Crook County
- 23% in Deschutes County

# SUSTAINED GROWTH FORECASTED BUT YEARLY RATE OF GROWTH SET TO DECREASE

Source: OED, Portland State University Population Estimates and Forecasts 1990-2024, Census Population Estimates 1990-2023

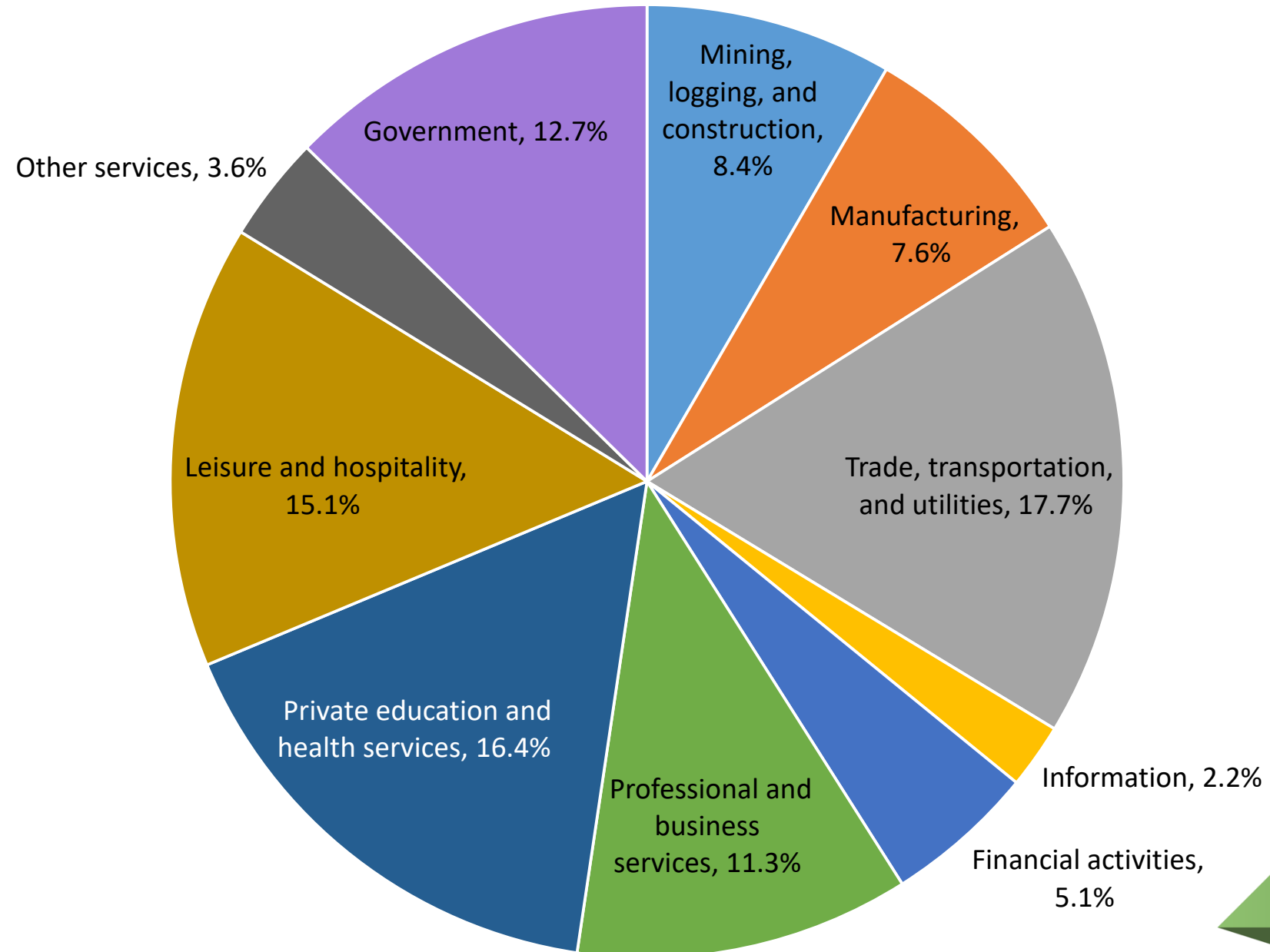
## Central Oregon Population (1990-2024), 5-Yr Interval Forecast (2025-2070), and Percentage Change



■ Estimated Yearly Population   
 ■ Forecast (5-Year Intervals)   
 — Year-over-year Change   
 ● Census Estimates

# 2023 EMPLOYMENT SHARE BY INDUSTRY IN CENTRAL OREGON

Source: Quarterly Census of Employment and Wages, Oregon Employment Department



# CENTRAL OREGON OCCUPATIONAL EMPLOYMENT PROJECTIONS 2023-2033, SELECT OCC.

Source: Oregon Employment Department

Occupation Title	2023 Occupation to Population Ratio	2023 Employment	Projected Employment 2033	Employment Change	Replacement Openings	Total Openings
<b>Health Care</b>	0.0403	10,223	11,796	1,573	9,639	11,212
<b>Healthcare Practitioners and Technical Occupations</b>	0.0243	6,176	7,088	912	3,504	4,416
Chiropractors	0.0002	63	75	12	28	40
Physician Assistants	0.0006	149	202	53	86	139
Occupational Therapists	0.0004	100	116	16	56	72
Physical Therapists	0.0009	219	270	51	87	138
Speech-Language Pathologists	0.0004	90	107	17	52	69
Veterinarians	0.0005	121	155	34	37	71
<b>Registered Nurses</b>	0.0089	2,264	2,501	237	1,225	1,462
Nurse Practitioners	0.0006	146	227	81	80	161
Family Medicine Physicians	0.0003	76	84	8	19	27
Dental Hygienists	0.0008	203	232	29	140	169
Clinical Laboratory Technologists and Technicians	0.0005	121	130	9	80	89
Diagnostic Medical Sonographers	0.0003	80	97	17	43	60
Radiologic Technologists and Technicians	0.0006	143	159	16	78	94
Pharmacy Technicians	0.0008	207	227	20	199	219
Surgical Technologists	0.0002	55	62	7	33	40
Medical Records Specialists	0.0006	154	172	18	109	127
Opticians, Dispensing	0.0002	57	64	7	55	62
Hearing Aid Specialists	0.0002	40	50	10	32	42
Health Technologists and Technicians, All Other	0.0003	79	88	9	59	68
Health Information Technologists and Medical Registrars	0.0002	46	55	9	30	39
Surgical Assistants	0.0003	81	92	11	52	63
<b>Healthcare Support Occupations</b>	0.0160	4,047	4,708	661	6,135	6,796
Home Health and Personal Care Aides	0.0056	1,426	1,647	221	2,238	2,459
Nursing Assistants	0.0023	595	662	67	877	944
Physical Therapist Assistants	0.0002	44	63	19	79	98
Dental Assistants	0.0014	345	392	47	486	533
<b>Medical Assistants</b>	0.0027	687	841	154	979	1,133
Medical Equipment Preparers	0.0004	110	123	13	153	166
Medical Transcriptionists	0.0002	58	51	-7	101	94

# Thank You!

*Please scan the QR code for a short survey.*



**NICOLE S. RAMOS, REGIONAL ECONOMIST**  
**NICOLE.S.RAMOS@EMPLOY.OREGON.GOV**

**SIGN UP FOR THE LATEST WORKFORCE AND ECONOMIC RESEARCH**  
**[WWW.QUALITYINFO.ORG/SUBSCRIBE](http://WWW.QUALITYINFO.ORG/SUBSCRIBE)**